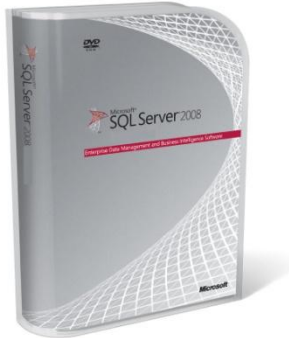




Microsoft[®] SQL Server[®] 2008

Integration Services



Microsoft[®] SQL Server[®] 2008 provides a scalable enterprise data integration platform with exceptional ETL and integration capabilities, enabling organizations to more easily manage data from a wide array of data sources.

<http://www.microsoft.com/sqlserver/2008/en/us/integration.aspx>

TOP NEW FEATURES

- Create Script tasks by using Microsoft Visual C#[®] and Microsoft Visual Basic[®] .NET.
- Use ADO.NET for tasks as well as for source and destination components.
- Improve scalability with thread pooling and enhanced lookup transformations.
- Perform more functional and scalable data transfers with the improved SQL Server Import and Export Wizard.

ENTERPRISE-READY PLATFORM

Use the SQL Server Integration Services platform to build enterprise-class data integration solutions.

Deploy trustworthy and reliable ETL solutions

Use package configurations to customize the way a package runs in different circumstances, such as for different server environments. Secure and digitally sign packages for deployment, and then easily install them on a production system by using a simple wizard. Enable resilient processes for unattended execution by using checkpoint restart and transaction support, together with WMI listeners and flexible error-handling and event-driven features. Take advantage of the integration of SQL Server Integration Services (SSIS) with SQL Server Management Studio to simplify the management and monitoring of packages in the SQL Server ecosystem.

Build efficient ETL solutions

Use the change data capture capabilities of SQL Server 2008 to optimize extract, transform, and load

(ETL) operations by refreshing only data that has changed since the previous iteration. Use the improved SQL Server Import and Export Wizard to perform more functional and scalable data transfers.

Easily integrate diverse data sources and destinations

Access data in SAP and other common sources, including text files, Teradata, OLE DB, and ADO.NET data sources (including ODBC for .NET). Improve integration with other systems because SQL Server 2008 uses ADO.NET for tasks as well as data sources and destinations. Easily integrate service oriented architectures and other nonstandard data sources by using the built-in support for XML and Web Services data. Use the optimized SQL Server destination for data loading, including directly targeted SQL Server Mobile databases. Use metadata integration and shared engineering to load Reporting Services reports or Analysis Services cubes straight from the SSIS pipeline.

Perform out-of-the-box, high-performance transformations

Take advantage of a scalable transformation engine from lightweight 32-bit systems to high-end 64-bit architectures.

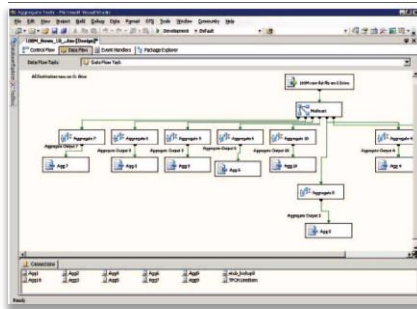
Perform powerful operations, such as data and character conversions, creating calculated columns, conditional operations for partitioning and filtering, lookups, sorting, aggregation, and merges. Take advantage of improvements to lookup performance in SQL Server 2008. Automatically improve performance of highly-parallel package designs by using the improved thread pooling of SQL Server 2008.

DEVELOPER PRODUCTIVITY

Rapidly develop SSIS packages in an intuitive development environment.

Take advantage of a comprehensive development environment

Use Business Intelligence Development Studio to create shared solutions with Analysis Services and Reporting Services, including source control, metadata integration, and the design, testing, deployment, and maintenance of end-to-end business intelligence applications.



Business Intelligence Development Studio

Increase developer productivity with visual debugging

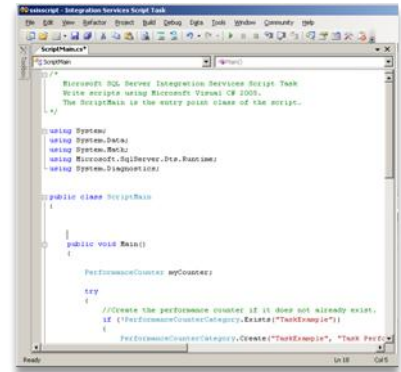
Use Data Viewers to see the data pipeline at work, visualizing data during transformation in grids, graphs, and charts, while breakpoints, variable watches, and the call stack provide powerful debugging capabilities.

EXTENSIBLE AND CUSTOMIZABLE

Go beyond simple ETL solutions by using the power of the Microsoft .NET platform and SQL Server 2008.

Extend integration capabilities with VSTA

Use the code design environment of Microsoft Visual Studio® Tools for Applications (VSTA) to write Script tasks in Microsoft C#. NET and Visual Basic. NET, and seamlessly upgrade SQL Server 2005 Visual Studio for Applications (VSA) Script tasks. Code and distribute your own reusable components to meet custom requirements.



```
using System;
using System.Data;
using System.Data.SqlClient;
using Microsoft.SqlServer.Dts.Tasks.ScriptTask;

public class ScriptTask : ScriptTaskBase
{
    public void Main()
    {
        PerformanceCounter myCounter;

        try
        {
            //Create the performance counter if it does not already exist.
            if (!PerformanceCounterCategory.Exists("TaskExample"))
            {
                PerformanceCounterCategory.Create("TaskExample", "Task Example");
            }
        }
    }
}
```

Using C#.NET in the Script task

Extend integration with data mining

Build data mining functionality into your SSIS solution not only by training models from integrated data, but also by producing results by applying data mining models to data sources inside your SSIS packages. Use predictive models to impute incomplete and missing data, or use association and clustering models to identify outliers and anomalies for data quality issues—all captured, with rigorous audit and execution metadata.

Integrate with the SSIS community

Use the architecture and infrastructure of SQL Server Integration Services to join a remarkably dynamic and diverse community from specialized software vendors to committed users. Easily develop and distribute your own advanced components by using the readily extensible and powerful infrastructure of SQL Server Integration Services. Enjoy active and helpful communities for sharing ideas, components, and support.

For more information about Microsoft SQL Server 2008 visit <http://www.microsoft.com/sqlserver/2008/en/us/default.aspx>. For the latest developer news and more information on Microsoft's broad range of resources for developers, including support programs, events, training, and the MSDN Library Online, visit MSDN Online at <http://msdn.microsoft.com/>.

This data sheet is for informational purposes only. MICROSOFT MAKES NO WARRANTIES, EXPRESS OR IMPLIED, IN THIS SUMMARY.

The example companies, organizations, products, domain names, e-mail addresses, logos, people, places, and events depicted herein are fictitious. No association with any real company, organization, product, domain name, e-mail address, logo, person, place, or event is intended or should be inferred. (Use this only if fictitious content appears.)

0308 Part No. 098-00000 (color)
Part No. 098-00000 (black and white)

